

ENDURANCE

WORKWEAR



SABS APPROVED WORKWEAR

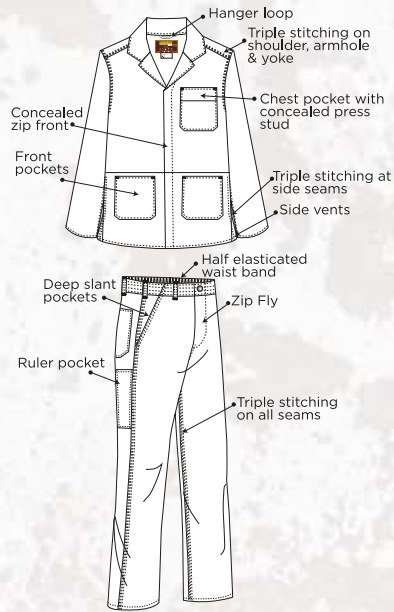
QUALITY.
SERVICE.
RELIABILITY.



ENDURANCE WORKWEAR

All Endurance Workwear garments are made from SABS approved fabrics and comply to the SANS 434:2011 specification. Every Endurance Workwear garment is constructed in South Africa and all bear the SABS mark of approval.

All Flame retardant fabrics used comply to the SABS 1423-1 requirement.
All J54 100% cotton and D59 100% cotton fabrics used comply to SANS 1387-4.



J54 SABS APPROVED CONTI SUITS EDR01

FABRIC: J54 100% COTTON

WEIGHT: 220gm²

SIZES: 30-56

COLOURS AVAILABLE:

- ROYAL
- EMERALD
- BLACK
- NAVY
- KHAKI
- UNBLEACHED
- GREY
- RED
- WHITE
- ORANGE



J54 SABS APPROVED BOILER SUITS EDR02

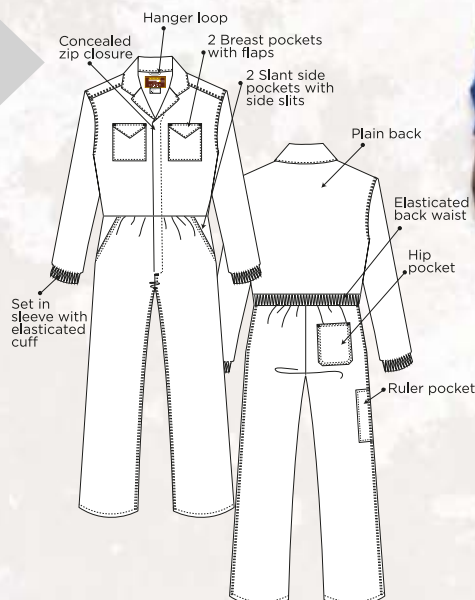
FABRIC: J54 100% COTTON

WEIGHT: 220gm²

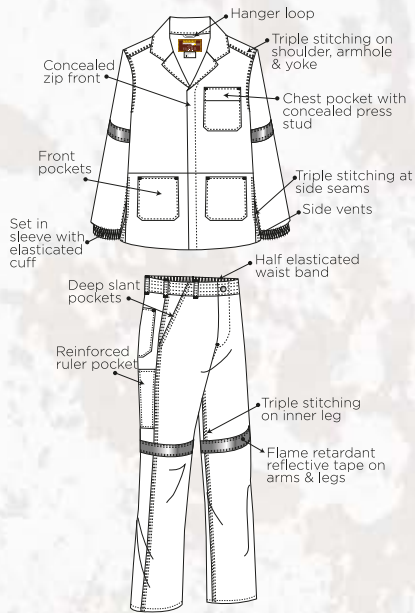
SIZES: 30-56

COLOURS AVAILABLE:

- ROYAL
- EMERALD
- BLACK
- NAVY
- KHAKI
- UNBLEACHED
- GREY
- RED
- WHITE
- ORANGE



D59 SABS APPROVED FLAME & ACID RETARDANT CONTI SUITS EDR03



FABRIC: D59 100% COTTON

WEIGHT: 270gm²

SIZES: 30-56

COLOURS AVAILABLE:

- NAVY
- FERN GREEN
- ROYAL
- ORANGE

D59 



D59 SABS APPROVED FLAME & ACID RETARDANT BOILER SUITS EDR04

FABRIC: D59 100% COTTON

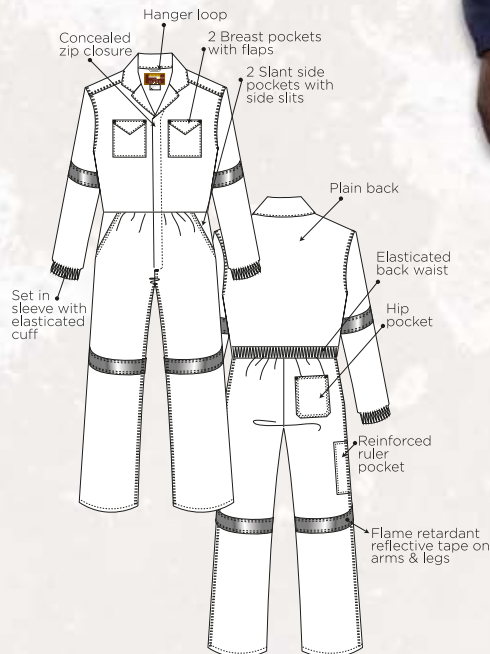
WEIGHT: 270gm²

SIZES: 30-56

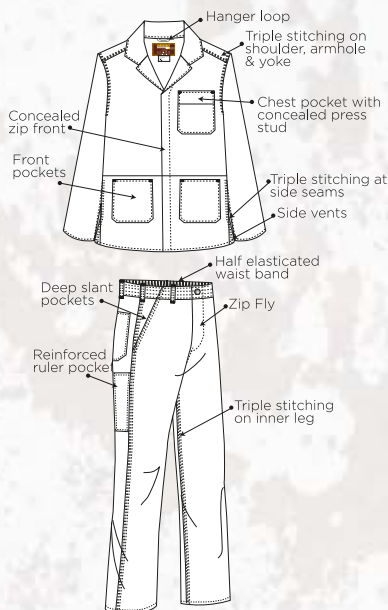
COLOURS AVAILABLE:

- NAVY
- FERN GREEN
- ROYAL
- ORANGE

D59 



D59 SABS APPROVED FLAME RETARDANT CONTI SUITS EDR05



FABRIC: D59 100% COTTON

WEIGHT: 270gm²

SIZES: 30-56

COLOURS AVAILABLE:

- NAVY
- FERN GREEN
- RED
- ROYAL
- ORANGE

D59 



ALSO
AVAILABLE
IN **D59**
NON-FLAME
IN ALL
COLOURS



D59 SABS APPROVED FLAME RETARDANT BOILER SUITS EDR06

FABRIC: D59 100% COTTON

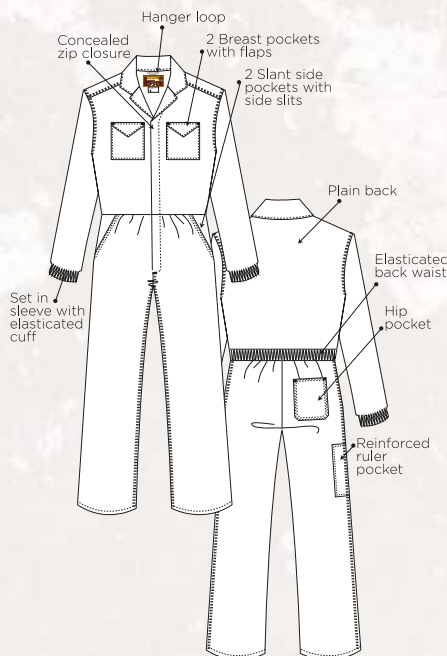
WEIGHT: 270gm²

SIZES: 30-56

COLOURS AVAILABLE:

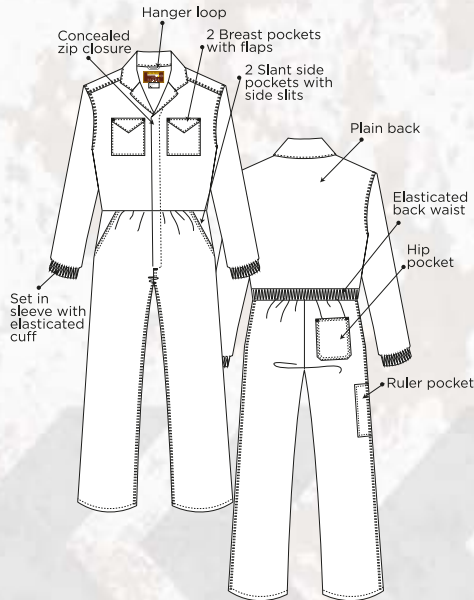
- NAVY
- FERN GREEN
- RED
- ROYAL
- ORANGE

D59 



MINING WEAR

Endurance Workwear garments can be manufactured according to customer specifications. Below are a few examples of customer specific workwear garments that can be produced.



AVAILABLE
IN ALL
COLOURS



REFLECTIVE TAPE OPTIONS

SILVER 25MM



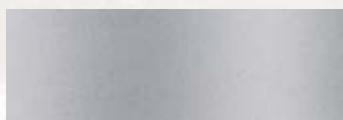
LIME & SILVER
50MM

SILVER 50MM



ORANGE & SILVER
50MM

SILVER FLAME
RETARDANT
50MM



LIME & SILVER
FLAME RETARDANT
50MM

ENDURANCE

WORKWEAR

SABS APPROVED WORKWEAR

FOR CONTI SUITS / CONTI JACKETS / CONTI TROUSERS / BOILER SUITS

SIZE	30	32	34	36	38	40	42	44	46	48	50	52	54	56
CHEST	30	32	34	36	38	40	42	44	46	48	50	52	54	56
WAIST	26	28	30	32	34	36	38	40	42	44	46	48	50	52

CORRESPONDING METRIC SIZE

CHEST	77	82	87	92	97	102	107	112	117	122	127	132	137	142
WAIST	67	72	77	82	87	92	97	102	107	112	117	122	127	132

